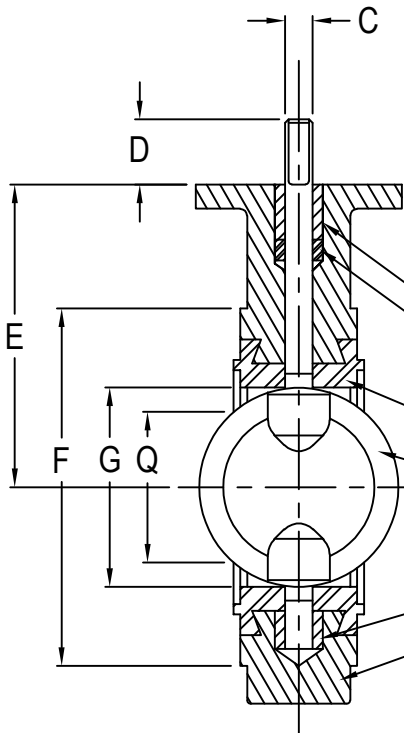
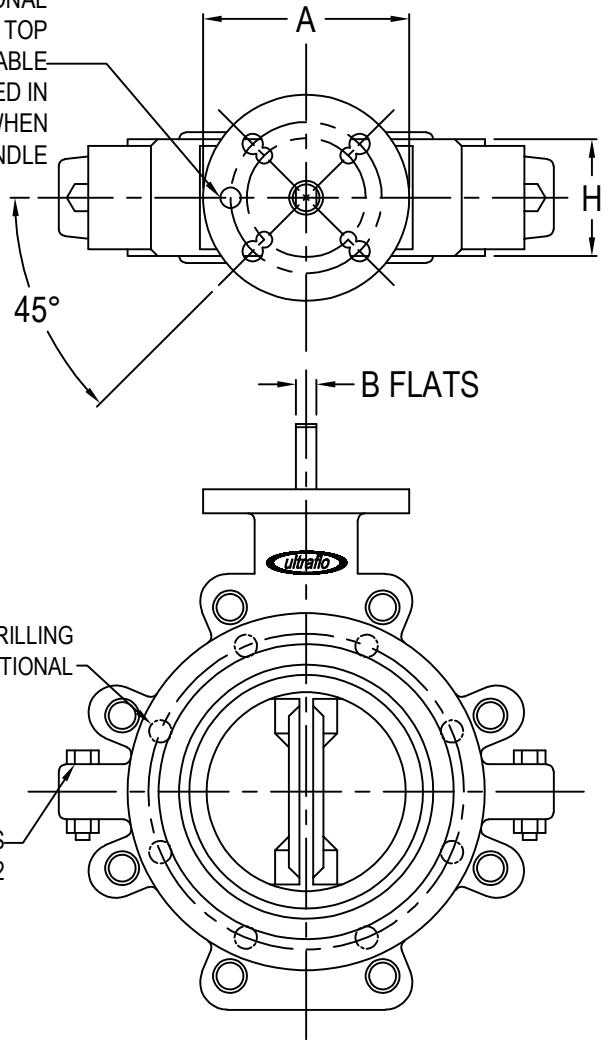


ATTENTION PLEASE CHECK THE ULTRAFLO WEBSITE AT www.ultraflovalve.com TO ENSURE YOU HAVE THE MOST RECENT COPY OF THIS DOCUMENT

NOTES:

1. ALL DIMENSIONS IN INCHES
2. VALVE WITH FULLCUT DISC CARRIES A PRESSURE RATING OF 150 P.S.I.
3. VALVE O.D. AND FLANGE BOLT CIRCLE MUST SHARE COMMON CENTER LINE. VALVE DESIGN TO BE PLACED BETWEEN ANSI 125 OR 150 LB FLANGES (NOT FOR USE WITH ASA 250 OR 300 LB FLANGES).
4. TEFLON LINED VALVES ARE UNSUITABLE FOR SLIP-ON FLANGES
5. Q DIMENSION: IS THE MINIMUM FLANGE OR PIPE I.D. TOLERABLE FOR PROTECTION OF DISC SEALING EDGE WHILE OPERATING CENTERED BETWEEN FLANGES.

2"-6" HAVE AN ADDITIONAL 5TH HOLE DRILLED IN TOP PLATE THAT WILL ENABLE VALVE TO BE LOCKED IN THE CLOSED POSITION WHEN USING A LOCKING HANDLE



NAME	NUMBER REQUIRED	MATERIAL	PART NUMBER
UPPER BUSHING	1		
PACKING	1		
SEAT	1		
DISC-STEM	1		
LOWER BUSHING	1		
BODY	1		

VALVE DIMENSIONS										TAPPED LUG DATA			TOP PLATE DRILLING						
SIZE	A	B	C	D	E	F	G	H	Q	WT. LBS	B. CIRCLE	HOLES	TAP	ISO DRILLING			STD DRILLING		
											B. CIRCLE	HOLES	HOLE DIA.	B. CIRCLE	HOLES	HOLE DIA.	B. CIRCLE	HOLES	HOLE DIA.
2	4.000	.375	.563	1.250	4.063	4.125	2.000	1.625	1.313	7.500	4.750	4	.625-11UNC	2.760	4	.375	3.250	4	.438
2.5	4.000	.375	.563	1.250	4.625	4.875	2.500	1.750	1.969	9.500	5.500	4	.625-11UNC	2.760	4	.375	3.250	4	.438
3	4.000	.375	.563	1.250	5.000	5.275	3.000	1.750	2.563	11.000	6.000	4	.625-11UNC	2.760	4	.375	3.250	4	.438
4	4.000	.438	.625	1.250	6.000	6.875	4.000	2.000	3.563	17.000	7.500	8	.625-11UNC	2.760	4	.375	3.250	4	.438
5	4.000	.438	.625	1.250	6.000	7.750	5.000	2.125	4.531	21.000	8.500	8	.750-10UNC	2.760	4	.375	3.250	4	.438
6	4.000	.500	.750	1.250	6.625	8.750	5.750	2.125	5.438	26.000	9.500	8	.750-10UNC	2.760	4	.375	3.250	4	.438
8	6.000	.625	.875	1.250	8.313	11.000	7.750	2.500	7.438	42.000	11.750	8	.750-10UNC	4.020	4	.438	5.000	4	.563
10	6.000	—	1.125	2.000	9.125	13.375	9.750	2.500	9.531	65.000	14.250	12	.875-9UNC	4.020	4	.438	5.000	4	.563
12	6.000	—	1.125	2.000	10.625	16.125	11.750	3.000	11.500	108.000	17.000	12	.875-9UNC	4.020	4	.438	5.000	4	.563

10" AND 12" C SIZE STEM CONNECTION DIAMETER WITH 1/4" X 1/2" KEYWAY.

TTMA DRILLING			
SIZE	B. CIRCLE	HOLES	HOLE DIA.
2	3.750	6	.438
3	4.875	8	.438
4	5.875	8	.438

ZONE	REV	DATE	BY	APP'D	ECN	DESCRIPTION
A4	5	06/16/21	TAL	JPL		ADDED TTMA DRILLING
A3	4	04/24/20	TAL	JPL		5.275 WAS 5.375 (ERROR)
A1	3	05/06/10	DSS	CJH	374	UPDATED TITLEBLOCK
E4	2	07/06/09	CJH	CJH		ADDED TEFLON NOTE
E4	1		TJM	TJM		REMOVED NOTE/FIXED TB

Ultraflo Corporation
A Subsidiary of Bray International, Inc.

#8 Trautman Ind. Dr.
Ste. Genevieve, Mo.
63670 800-950-1762

NAME	DATE
TJM	05/25/98
TJM	05/25/98

PART: 392 VALVE TAPPED LUG BODY, ONE-PIECE DISCSTEM, EPDM, NITRILE, VITON, BUNA OR TEFLON SEAT
 ECN: DWG: 399/392-4